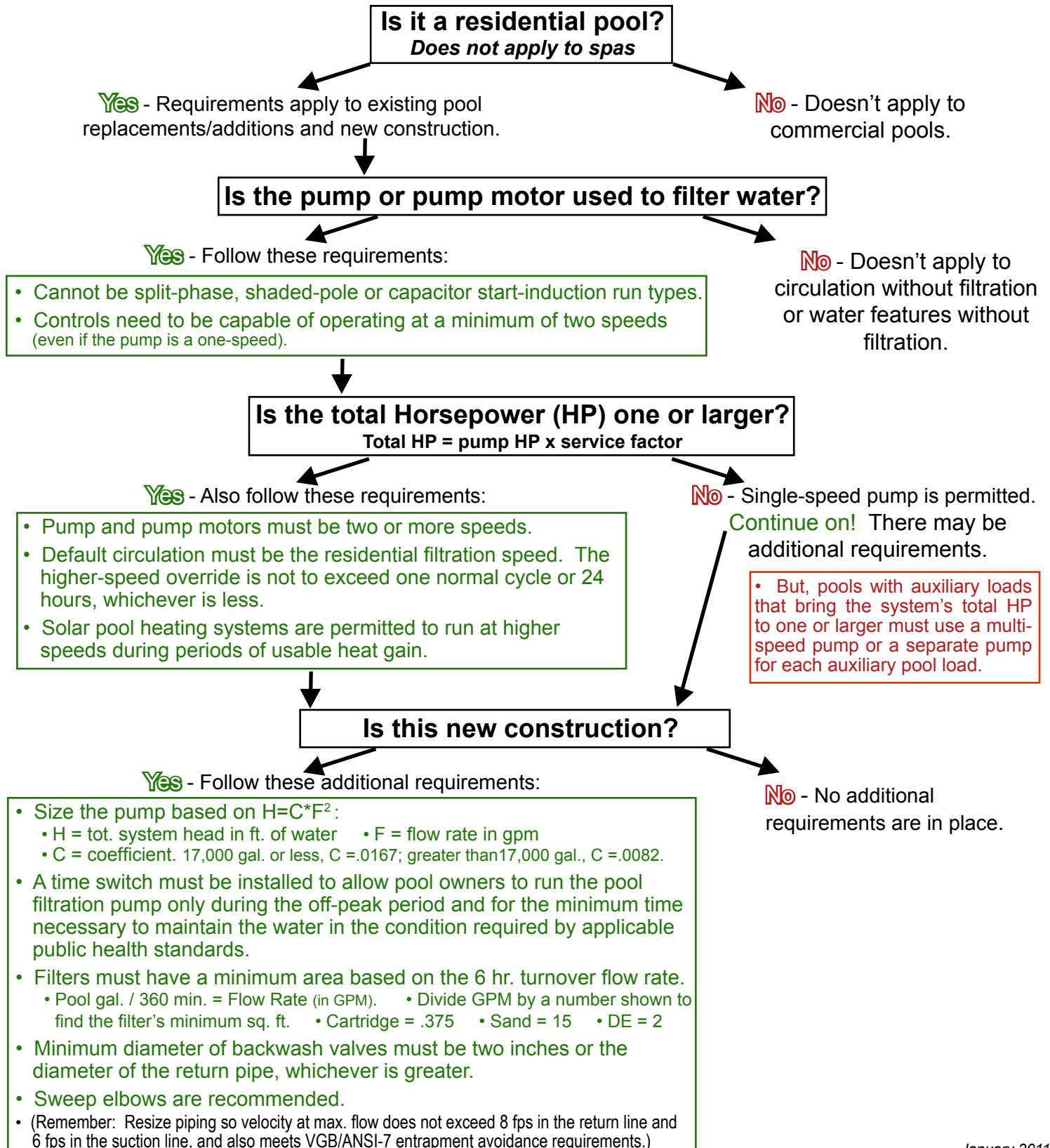


2011 Pool Pump / Pump Motor Energy Efficiency Requirements

July 1, 2011 - Manufacturers must meet new requirements in production on or after this date.

December 31, 2011 - Enforcement will begin. Installation of pumps / pump motors must comply with requirements and be done by a licensed pool contractor.



Additional Information and Revisions to the Florida Building Code (new construction)

Heaters - commercial and residential pools and spas - (these have already been in effect in FL)

- Fossil Fuel / Gas
 - 78% minimum fuel efficiency for gas-fired and oil-fired pool heaters.
 - No standing pilots for natural gas heaters.
- Heat Pumps
 - 4.0 minimum COP as per the AHRI 1160 low temp test.
 - All heaters must be equipped with a readily accessible on / off switch on the outside of the heater that allows shutting it off without adjusting the thermostat setting.

Filtration / Plumbing

- Design flow rate must not turn over pool water volume in less than six hrs. or 36 gpm, whichever is greater.
- Water flow velocity at maximum flow rate must not exceed 8 ft/sec in the return line and 6 ft/sec in the suction line.
- Solar access stubs must be separated by a minimum 18" (horizontal or vertical) of straight pipe.
- Backwash or multi-port valves must be a minimum of 2" or the diameter of the return pipe, whichever is greater.

Portable Spas

- The law requires portable spas to meet a certain standby power, based on the industry test protocol. This requirement must be met by the portable spa manufacturer.

Covers

- Heated pools and in-ground spas must be equipped with a vapor retardant cover or other approved means (including liquid covers). Heating systems deriving 70% or more of their energy source from site / renewable means are exempt.

Controls

- All residential filtration pump controls must have the capability of operating a minimum of two speeds with a default to the lower / filtration speed after one normal filtration cycle or 24 hours, whichever is less. The controls requirement applies even if a multi-speed pump is not being used. (If existing controls are replaced, the new controls must meet requirement.)

Enforcement

- Building departments will enforce these pool pump and pump motor requirements on both new and existing construction. If a particular building department does not require a permit for a replacement pump or motor on an existing pool, this does not discount that the law and code requires the replacement pump/motor to be two speed or greater. *Note: If repairing an existing pump or pump motor, an existing single speed pump or motor can still be used, but if it is being replaced, the new requirements kick in.